



SAVINGS
 ENTERPRISE
 Accelerate
 Print corner
 smartstream
 fastest
 maps
 Monochrome
 PageWide XL
 color
 Repro houses
 CAD color
 QUALITY
 Savings
 MONOCHROME
 Grow
 GIS
 TECHNOLOGY
 Enterprise
 QUALITY
 Speed
 Enterprise
 Speed
 Repro houses
 Print corner
 FASTEST
 smartstream
 CAD mono
 Maps
 GIS
 Repro houses
 Pigment ink
 Format
 Large
 CRD
 GIS
 Repro houses
 Print corner
 FASTEST
 smartstream
 CAD mono
 Maps
 GIS
 Repro houses
 Pigment ink
 Format
 Large

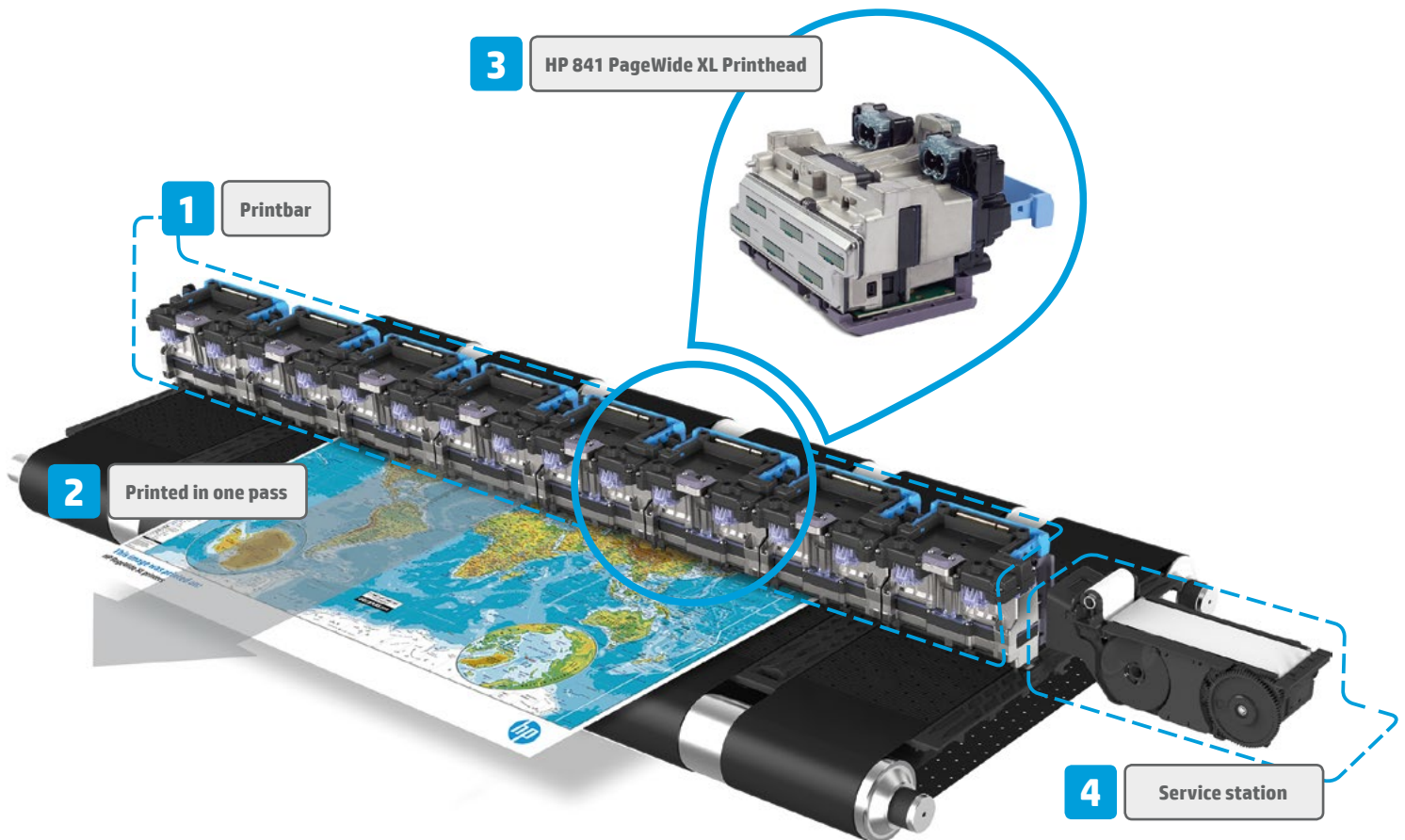


HP PageWide XL
 portfolio brochure

1 HP PageWide Technology: quality and speed	3
2 HP PageWide XL pigment ink	4
3 Monochrome and color workflow consolidation	5
Save time and reduce complexity in production environments	5
Save space and reduce complexity in print corners	5
4 HP PageWide XL printer portfolio	6
HP PageWide XL portfolio at a glance	7
HP PageWide XL 8000 Printer	8
HP PageWide XL 5000 Printer series	10
HP PageWide XL 4000/4500 Printer series	12
5 HP SmartStream software	14
6 Applications	15
7 HP PageWide XL accessories	16
8 Ease of use	18
9 HP media offering for HP PageWide XL pigment inks	19
10 HP Certified Partner Solutions	20
11 HP PageWide XL printing and the environment	21

1 HP PageWide Technology: quality and speed

Based on proven HP PageWide Technology—currently powering HP PageWide Web Presses producing 4 billion impressions monthly—HP PageWide XL printers offer breakthrough printing speeds in monochrome and color.



HP PageWide XL printers include a stationary 40-inch (101.6-cm) printbar **(1)** that spans the whole printing width. The entire page is printed in one pass **(2)**, enabling very high printing speeds.

The Printbar is built from 8 identical HP 841 PageWide XL Printhead modules **(3)** with the following characteristics:

- 5.08 inches (129 mm) per module
- 4 colors (cyan, magenta, yellow, black)
- 1200 nozzles per inch and per color

HP 841 PageWide XL Printheads provide reliable and long-life operation, with an

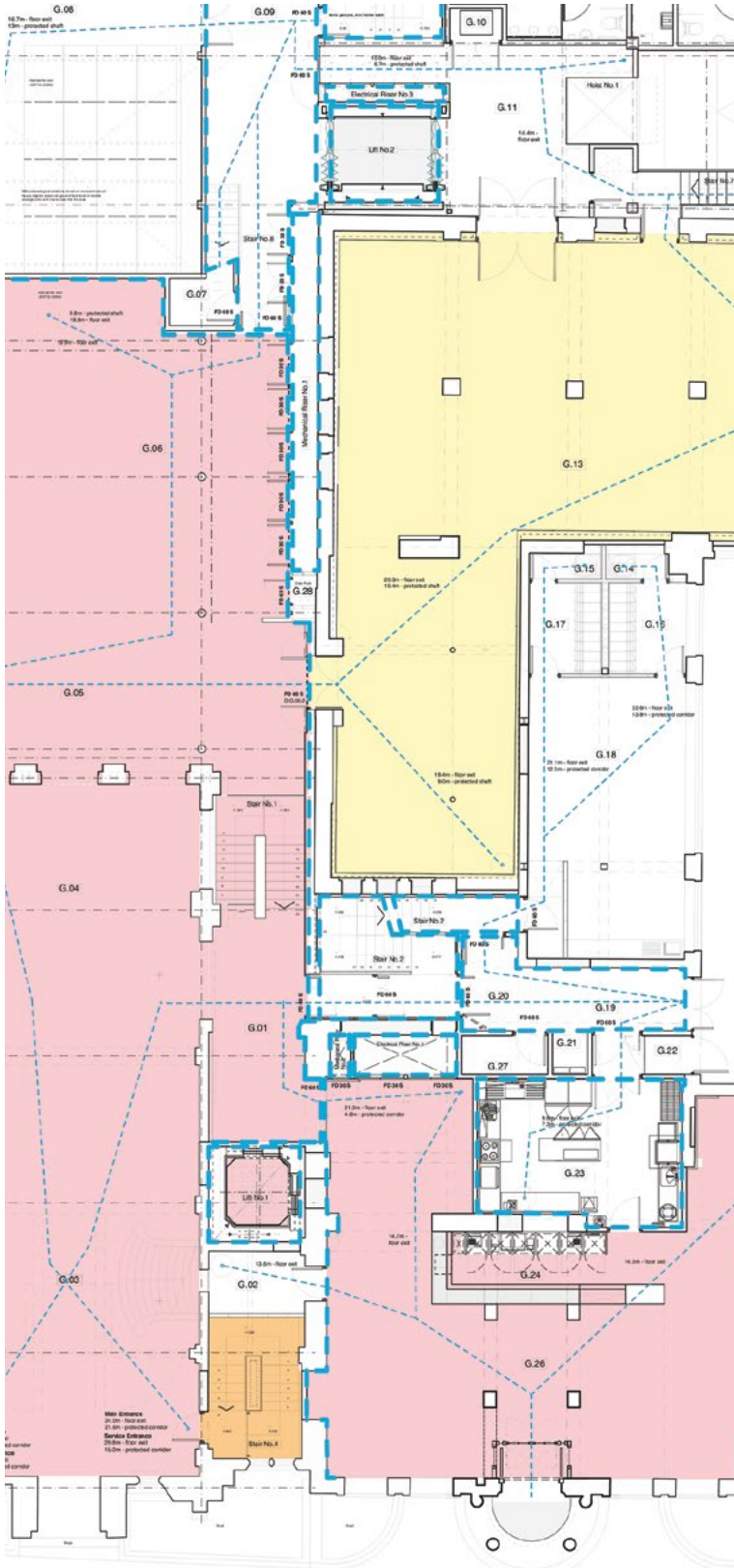
average life per printhead of 32 liters of ink. Print quality and consistency is provided by a closed-loop system contained in the service station. **(4)**

The service station includes sensors that detect nozzle status and a densitometer used for color calibration and printhead alignment. All necessary corrections and cleanings are performed automatically.

To help maximize productivity, HP 841 PageWide XL Printheads and HP PageWide XL pigment ink are specially designed to enable extended time between service station cycles of up to hundreds of pages.

2

HP PageWide XL pigment ink



Set a new quality standard for technical documents

HP 841 PageWide XL Printheads, working with HP PageWide XL pigment ink, are designed to produce durable and high-quality output with dark blacks and vivid colors on a range of media including uncoated bond papers, and produce moisture- and fade-resistant prints.¹ Accurate and reliable dot placement results in crisp lines, fine detail, and smooth grayscales.

New HP PageWide XL pigment inks for quality, speed, and reliability

HP PageWide Technology offers high quality at high printing speeds, reliable and robust operation, and economical print production. This is achieved using HP 841 PageWide XL Printheads and HP PageWide XL pigment inks formulated to meet the demanding requirements of HP PageWide printing.

Reliable operation is dependent upon the printhead that produces drops on-demand, and each drop must meet image quality specifications on weight, trajectory, and speed. Reliable performance impacts operating life and low operational failure rates.

Note: HP PageWide XL printers are not designed to use continuous ink systems. HP PageWide XL printers are designed for ink cartridges to be used until they are empty. Refilling cartridges prior to depletion might cause the printer to fail, and voids the HP ink cartridge warranty.

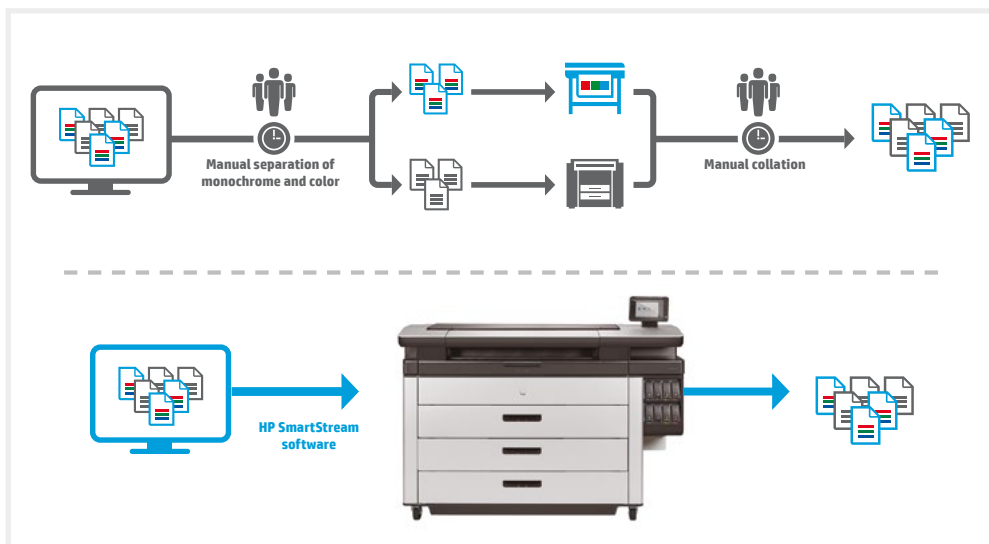
Print durability

An important element of application versatility is print durability, which includes resistance to light fade, water, and highlighter smear. HP ink chemists chose pigment-based inks over dye-based inks to achieve high durability, especially on plain papers. HP's years of experience in improving the light-fade resistance of inkjet prints was fully leveraged in the development of HP PageWide XL pigment inks. Proprietary polymeric binders in the inks form a tough film on the paper surface that protects and immobilizes the pigments.

3 Monochrome and color workflow consolidation

Save time and reduce complexity by consolidating your monochrome and color workflows in production environments

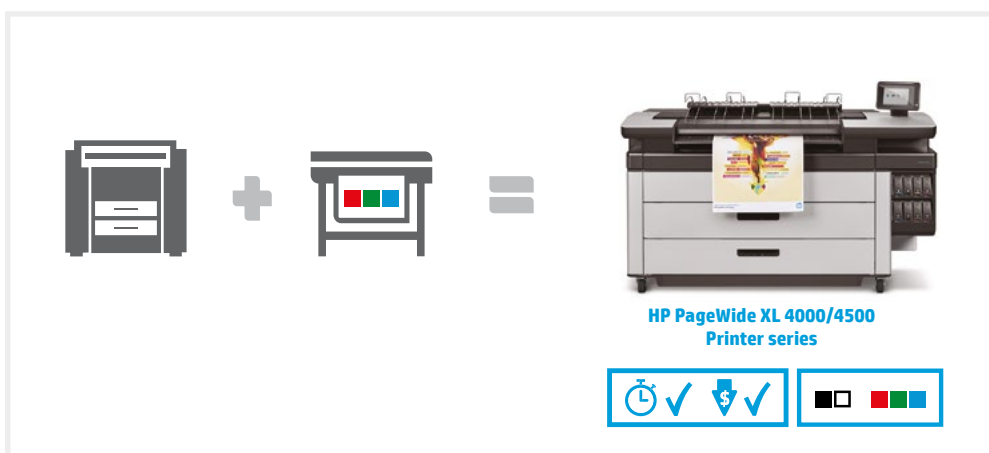
In reprographics environments, it is very common to print mixed monochrome and color sets—typically a long and complex process since color and monochrome pages must be manually separated by an operator, who must then send color and monochrome pages to two different printers (most likely using two different types of job submission software), and then finally manually collate the monochrome and color pages together.



With HP PageWide XL printers, consolidated workflow efficiencies in delivering mixed monochrome and color sets help contribute to up to 50% savings in total production costs²

Save space and reduce complexity in print corners

With a single device, you can save space and reduce complexity—you now have one less printer to manage on the network or learn. This helps keep everyone focused on the project. And you no longer need to manage two sets of printing supplies.



Do the work of two printers with one—faster and lower cost than LED³

4 HP PageWide XL printer portfolio

Do all your production on one printer for monochrome and color—with breakthrough speeds and lower production costs, there are no trade-offs.



HP PageWide XL 8000 Printer

The fastest large-format monochrome and color printer ever, with up to 50% savings in total production costs²



HP PageWide XL 5000 Printer series

Powerful, efficient monochrome and color production with up to 30% savings in total production costs⁴

	HP PageWide XL 8000 Printer	HP PageWide XL 5000 Multifunction Printer	HP PageWide XL 5000 Printer
Product number	CZ309B	CZ311B	CZ311C
Print speed (D/A1 pages/min)	Up to 30		Up to 14
Ink cartridges	775 ml Cyan, magenta, yellow, black; dual HP ink supplies with auto-switch		400 ml Cyan, magenta, yellow, black; dual HP ink supplies with auto-switch
Maximum number of rolls	Up to 6		Up to 4
Integrated 1200 dpi scanner	-	✓	✓
Scanner speed	-	Color: up to 3 in/sec (7.62 cm/sec); Grayscale: up to 10 in/sec (25.4 cm/sec)	-
Paper output (standard)	High-capacity stacker and PostScript	High-capacity stacker and PostScript	Top stacker and PostScript
Paper output (optional)	Folder and top stacker ⁵		Folder ⁵
PostScript (standard)	✓		✓
Memory	16 GB DDR		8 GB DDR3
Hard drive	1 x 128 GB SSD; 1 x 500 GB HDD, self-encrypted with AES-256		1 x 500 GB HDD, self-encrypted with AES-256
Security			
Secure Disk Erase	✓		✓
Control panel access lock	✓		✓
Personal identification number (PIN) printing	✓		✓
API Netgard® MFD Smartcard security appliance for CAC, PIV, & CIV cards	✓		✓
Celiveo®	✓		✓



**GOLD
AWARD
2016**

For over 60 years, the iF DESIGN AWARD has been recognized the world over as a label of design excellence. The iF logo is an internationally established symbol identifying outstanding achievements in design.

The HP PageWide XL 8000 Printer has received the award in the Product/Category IT-Computer.



HP PageWide XL 4000/4500 Printer series

**Do the work of two printers
with one—faster and lower
cost than LED³**

HP PageWide XL 4000 Multifunction Printer	HP PageWide XL 4000 Printer	HP PageWide XL 4500 Multifunction Printer			HP PageWide XL 4500 Printer		
M0V02A	M0V01A	CZ312A	CZ312B	CZ312C	CZ313A	CZ313B	CZ313C
Up to 8				Up to 12			
400 ml Cyan, magenta, yellow, black							
Up to 4							
✓	-	✓	-				
Color: up to 3 in/sec (7.62 cm/sec); Grayscale: 10 in/sec (25.4 cm/sec)	-	Color: up to 3 in/sec (7.62 cm/sec); Grayscale: up to 10 in/sec (25.4 cm/sec)			-		
Top stacker							
-							
✓	Optional	✓	-		✓	-	
8 GB DDR3							
1 x 500 GB HDD, self-encrypted with AES-256							
✓							
✓							
✓							
✓							
✓							

HP PageWide XL 8000 Printer

The fastest large-format monochrome and color printer ever, with up to 50% savings in total production costs²



ACCELERATE

Meet the tightest deadlines

- Print up to 30 D/A1 pages/min (1500 D/A1 pages/hr)—the fastest print speed in the market, even versus LED²
- Deliver mixed monochrome and color sets in 50% of the time with a consolidated workflow⁶
- Start printing in 50% of the time⁷—an ultrafast processor, native PDF management, HP SmartStream software
- Free up the operator—production stacker/online folder,⁵ up to 6 rolls, dual ink supplies with auto-switch



GROW

Fast color, excellent document quality

- Generate new business growth—print GIS map and point-of-sale (POS) poster applications at breakthrough speeds
- Set a new technical document standard with crisp lines, fine detail, and smooth grayscales that beat LED⁸
- HP PageWide XL pigment ink for dark blacks, vivid color and moisture/fade resistance—even on uncoated bond¹
- Print on a wide range of media up to 40 inches/101.6 cm—covering ISO/US technical and offset standards⁹



SAVE

Cut total production costs up to 50%²

- Print monochrome technical documents at the same or lower cost than comparable LED printers¹⁰
- Print color technical documents at the lowest cost in the market¹¹
- Cut job preparation and finishing costs up to 50%⁶
- See up to 10 times lower energy consumption than comparable LED printers¹²



POWERED BY
Adobe PDF Print Engine





Up to 6 rolls—automatic roll switching when a roll is depleted or a different page size is selected



Dual 775-ml HP ink supplies with auto-switch—replace used cartridges while the printer is running



Print up to 30 D/A1 pages/min (1500 D/A1 pages/hr)



High-capacity output solutions specially designed to keep up with HP PageWide XL print speeds (HP PageWide XL High-capacity Stacker and HP PageWide XL Folder⁵)



8-inch (203-mm) touchscreen with status light that reports at-a-glance current status from a distance



Ordering information

Product	CZ309B	HP PageWide XL 8000 40-in Printer with High-capacity Stacker and PostScript/PDF
Accessories	CZ318A	HP PageWide XL Drawer
	CZ320A	HP PageWide XL Top Stacker
	G6H50B	HP SD Pro 44-in Scanner
	G6H51B	HP HD Pro 42-in Scanner
	K5H75A	HP PageWide XL Folder
	L3J69AAE	HP SmartStream Preflight Manager
	L3J72AAE	HP SmartStream Print Controller for HP PageWide XL 8000
	L3M58A	HP PageWide XL Folder with Tab Applicator
	M0V04A	HP PageWide XL Folder Upgrade Kit for Long Plots
Original HP PageWide XL printheads and consumables	C1Q19A	HP 841 PageWide XL Printhead
	F9J47A	HP 841 PageWide XL Cleaning Container
	F9J48A	HP 841 PageWide XL Maintenance Cartridge
Original HP PageWide XL ink cartridges	C1Q45A	HP 842A 775-ml Black PageWide XL Ink Cartridge
	C1Q46A	HP 842A 775-ml Cyan PageWide XL Ink Cartridge
	C1Q47A	HP 842A 775-ml Magenta PageWide XL Ink Cartridge
	C1Q48A	HP 842A 775-ml Yellow PageWide XL Ink Cartridge

HP PageWide XL 5000 Printer series

Powerful, efficient monochrome and color production with up to 30% savings in total production costs⁴



LEAD

Fast delivery times in monochrome and color

- Up to 14 D/A1 pages/minute print speed, quick 30-second first page out
- Deliver mixed monochrome and color sets in 50% of the time with a consolidated workflow¹³
- Start printing in 50% of the time⁷—an ultra-fast processor, native PDF management, HP SmartStream software
- Free up the operator—production stacker/online folder,⁵ up to 4 rolls, dual ink supplies with auto-switch



GROW

Fast color, excellent document quality

- Generate new business growth—print GIS map and point-of-sale (POS) poster applications at breakthrough speeds
- Set a new technical document standard with crisp lines, fine detail, and smooth grayscales that beat LED⁸
- HP PageWide XL pigment ink for dark blacks, vivid colors, moisture/fade resistance—even on uncoated bond¹
- Print on a wide range of media up to 40 inches/101.6 cm—covering ISO/US technical and offset standards⁹



SAVE

Cut total production costs up to 30%⁴

- Print monochrome and color technical documents at the same or lower cost than comparable LED printers¹⁴
- Do it all with one space-saving device for both monochrome and color, or opt for the MFP to print/scan/copy
- Cut job preparation and finishing costs up to 50%¹³
- See up to 5 times lower energy consumption than comparable LED printers¹⁵



POWERED BY
Adobe PDF Print Engine





Up to 4 rolls—automatic roll switching when a roll is depleted or a different page size is selected



Dual 400-ml HP ink supplies with auto-switch—replace used cartridges while the printer is running



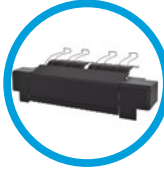
Print up to 14 D/A1 pages/minute, quick 30-second first page out



High-capacity output solutions specially designed to keep up with HP PageWide XL print speeds (HP PageWide XL High-capacity Stacker and HP PageWide XL Folder⁵)



Top stacker designed to save space; with a capacity of up to 100 pages



Integrated 1200 dpi scanner—scan at speeds up to 3 in/sec (7.62 cm/sec) in color and 10 in/sec (25.4 cm/sec) in grayscale (only available with the HP PageWide XL 5000 Multifunction Printer)



8-inch (203-mm) touchscreen with status light that reports at-a-glance current status from a distance



Ordering information

Product	CZ310B	HP PageWide XL 5000 40-in Printer with High-capacity Stacker and PostScript/PDF
	CZ310C	HP PageWide XL 5000 40-in Printer with Top Stacker and PostScript/PDF
	CZ311B	HP PageWide XL 5000 40-in Multifunction Printer with High-capacity Stacker and PostScript/PDF
	CZ311C	HP PageWide XL 5000 40-in Multifunction Printer with Top Stacker and PostScript/PDF
Accessories	CZ318A	HP PageWide XL Drawer
	CZ319A	HP PageWide XL High-capacity Stacker
	CZ320A	HP PageWide XL Top Stacker
	G6H50B	HP SD Pro 44-in Scanner
	G6H51B	HP HD Pro 42-in Scanner
	K5H75A	HP PageWide XL Folder
	L3J69AAE	HP SmartStream Preflight Manager
	L3J74AAE	HP SmartStream Print Controller for HP PageWide XL 5000 Printer series
	L3M58A	HP PageWide XL Folder with Tab Applicator
	M0V04A	HP PageWide XL Folder Upgrade Kit for Long Plots
Original HP PageWide XL printheads and consumables	C1Q19A	HP 841 PageWide XL Printhead
	F9J47A	HP 841 PageWide XL Cleaning Container
	F9J48A	HP 841 PageWide XL Maintenance Cartridge
Original HP PageWide XL ink cartridges	F9J82A	HP 848A 400-ml Black PageWide XL Ink Cartridge
	F9J83A	HP 848A 400-ml Cyan PageWide XL Ink Cartridge
	F9J84A	HP 848A 400-ml Magenta PageWide XL Ink Cartridge
	F9J85A	HP 848A 400-ml Yellow PageWide XL Ink Cartridge

HP PageWide XL 4000/4500 Printer series

Do the work of two printers with one—faster and lower cost than LED³



FASTER

Monochrome and color, faster than LED³

- Move projects forward—up to 12 D/A1 pgs/min monochrome and color, quick 30-second first page out
- Print, scan, copy in a single device—integrated 1200 dpi scanner with advanced and convenient workflows
- It's simple—a single, easy-to-use device that meets all your printing and scanning needs
- Focus on your project, not the printer—up to 4 rolls with 100-page integrated top stacker



SAVE

Better document quality vs LED, lower cost³

- Run at lower costs than low-volume LED³—in monochrome and color
- Produce excellent technical documents—crisp lines, fine detail, smooth grayscales that beat LED⁸
- HP PageWide XL pigment ink for dark blacks, vivid colors, moisture/fade resistance—even on uncoated bond¹
- Use half the energy per page compared to equivalent LED printers¹⁶



SECURE

Help meet tough IT, reliability standards

- Protect and manage confidential jobs more securely—retrieve documents at the printer with a PIN
- Help safeguard confidential information using a self-encrypting HDD with AES-256, Secure Disk Erase and IPsec
- Reduce time and costs of managing individual drivers by using HP DesignJet Universal Print Driver
- Rely on proven HP PageWide Technology for dependable production printing¹⁷

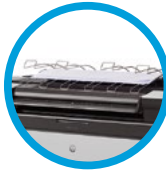




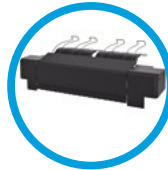
Up to 4 rolls—automatic roll switching when a roll is depleted or a different page size is selected



400-ml HP ink supplies



Print up to 12 D/A1 pages/minute, quick 30-second first page out



Top stacker designed to save space and allows the printer to be placed against a wall; capacity up to 100 pages



Integrated 1200 dpi scanner—scan at speeds up to 3 in/sec (7.62 cm/sec) in color and 10 in/sec (25.4 cm/sec) in grayscale (only available with the HP PageWide XL 4000/4500 Multifunction Printers)



8-inch (203-mm) touchscreen with status light that reports at-a-glance current status from a distance



Ordering information

Product	CZ312A	HP PageWide XL 4500 40-in Multifunction Printer with PostScript/PDF
	CZ312B#BCB	HP PageWide XL 4500 TAA-compliant Multifunction Printer with removable encrypted HDD and PostScript (available as of May 1st, 2016)
	CZ312C	HP PageWide XL 4500 40-in Multifunction Printer 3-year warranty with PostScript/PDF
	CZ313A	HP PageWide XL 4500 40-in Printer
	CZ313B#BCB	HP PageWide XL 4500 TAA-compliant Printer with removable encrypted HDD and PostScript (available as of May 1st, 2016)
	CZ313C	HP PageWide XL 4500 40-in Printer 3-year warranty
Accessories	MOV01A	HP PageWide XL 4000 40-in Printer
	MOV02A	HP PageWide XL 4000 40-in Multifunction Printer with PostScript/PDF
	CZ317A	HP PageWide XL PostScript/PDF Upgrade Kit ¹⁸
	CZ318A	HP PageWide XL Drawer
	G6H50B	HP SD Pro 44-in Scanner
	G6H51B	HP HD Pro 42-in Scanner
Original HP PageWide XL printheads and consumables	L3J69AAE	HP SmartStream Preflight Manager
	L3J76AAE	HP SmartStream Print Controller for HP PageWide XL 4000/4500
	C1Q19A	HP 841 PageWide XL Printhead
	F9J47A	HP 841 PageWide XL Cleaning Container
Original HP PageWide XL ink cartridges	F9J48A	HP 841 PageWide XL Maintenance Cartridge
	C1Q57A	HP 843A 400-ml Black PageWide XL Ink Cartridge
	C1Q58A	HP 843A 400-ml Cyan PageWide XL Ink Cartridge
	C1Q59A	HP 843A 400-ml Magenta PageWide XL Ink Cartridge
	C1Q60A	HP 843A 400-ml Yellow PageWide XL Ink Cartridge

5 HP SmartStream software for HP PageWide XL and HP DesignJet printers

Your new large-format production workflow—now two times more efficient¹⁹



SPEED Do jobs in 50% of the time¹⁹

- Respond to the tightest deadlines with ultra-fast HP SmartStream Preflight Manager processing
- Reduce reprints—rely on native PDF management with Adobe PDF Print Engine 3²⁰
- Stop changing settings one by one—create presets to bundle all desired settings, then reuse as needed



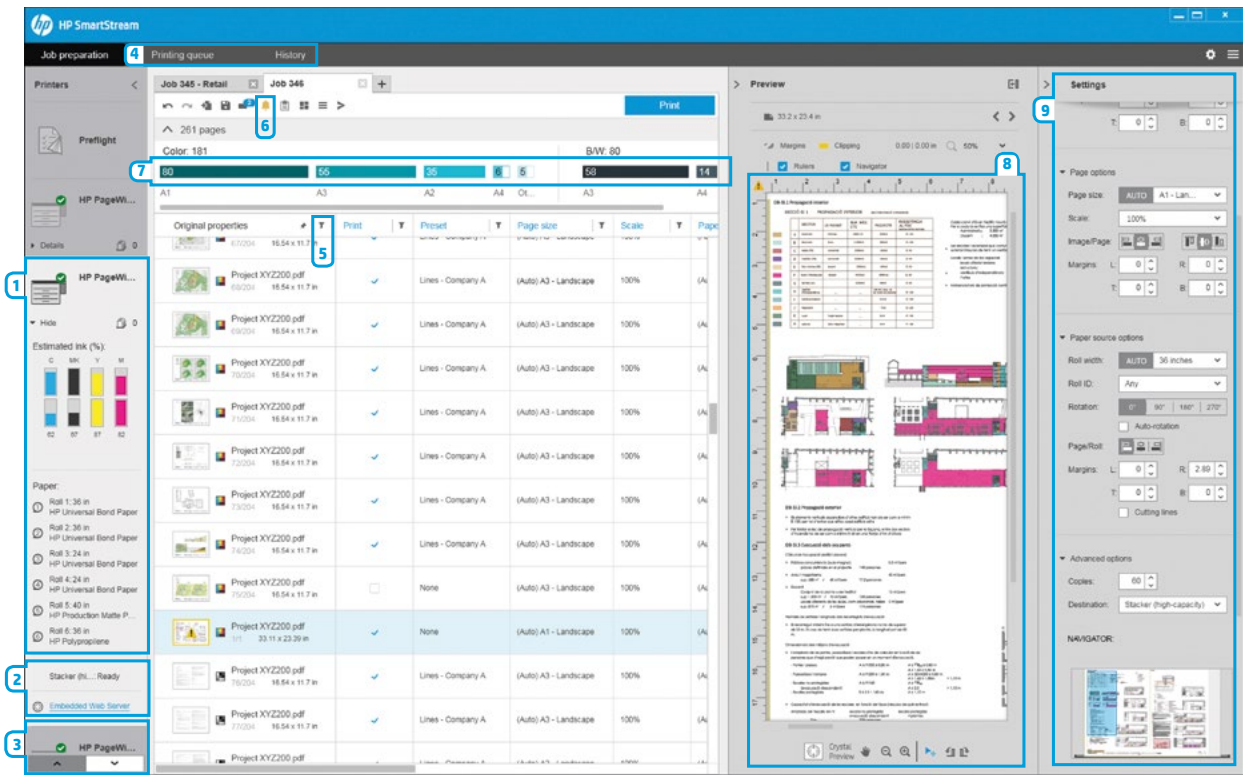
EFFICIENCY Your production workflow just better

- Help improve your current technical production workflow efficiency for single, multiple operator environments
- Empower your current production workflow with the intuitive HP SmartStream Preflight Manager
- Run HP PageWide XL, HP DesignJet production accessories—online folder, high-capacity/integrated top stacker⁵
- Manage all connected HP PageWide XL and HP DesignJet production printers in your fleet



GROWTH Expand with color production

- Efficiently produce all your GIS maps and point-of-sale (POS) posters on HP PageWide XL printers
- Preview color, just as it will print, and adjust settings with interactive HP Crystal Preview Technology
- Get the most out of your media with nesting designed to minimize paper waste
- Get accurate data for invoicing—job report summary even includes pixel coverage



(1) Detailed information about printer status, ink level, loaded media, and pages in the queue to be printed. (2) Production accessories integration: online folder, high-capacity, and top stacker.⁵ (3) Multi-printer support—manage up to 10 connected HP PageWide XL and HP DesignJet production printers in your fleet. (4) Visualize the status of your job through the Printing queue and Job history panel; Job history allows you to easily make reprints. (5) Filtering option and extract feature—multi-page job management. (6) Resolution center—automatic detection of potential PDF and layout issues. (7) Visualize clusters of pages by size and type (color or monochrome)—simplify production of large jobs. (8) HP Crystal Preview Technology—preview color just as it will print. (9) Adjust all your printing settings per page, file, or job.

Note: HP SmartStream software supports the following printers: HP PageWide XL 8000 Printer, HP PageWide XL 5000 Printer series, HP PageWide XL 4000/4500 Printer series, HP DesignJet T3500 Production MFP, HP DesignJet T7100/T7200 Production Printers, HP DesignJet Z6600 Production Printer, and HP DesignJet Z6200/Z6800 Photo Production Printers.

6 Applications

Set a new standard for technical document quality, produce more color jobs

- Crisp lines, fine detail, and smooth grayscales beat LED⁸
- Produce dark blacks and vivid colors—even on uncoated bond—in moisture- and fade-resistant prints¹

Generate new business growth by printing color GIS map and point-of-sale (POS) poster applications at breakthrough speeds

- Print on a wide range of media up to 40 inches/ 101.6 cm—covering ISO/US technical and offset standards⁹

“Architects are usually happy with black-and-white prints but for quality surveyors and landscapers, color is increasingly important. And for many customers, a mix of mono and color is required. However, our existing LED printers couldn’t keep up with demand or offer color as an option.”

Vincent Tay, owner, Vantage Intelligence

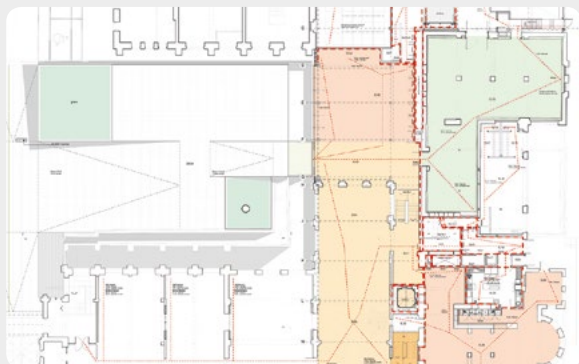
Black-and-white line drawings



Maps



Color drawings



Posters and roll-up banners



7

HP PageWide XL accessories

HP PageWide XL accessories help free up resources and increase your productivity, from the online folder to stackers and scanning and copying options

Finishing

1. HP PageWide XL Folder

High-productivity online folding for the HP PageWide XL 8000 Printer and the HP PageWide XL 5000 Printer series.



Full online integration

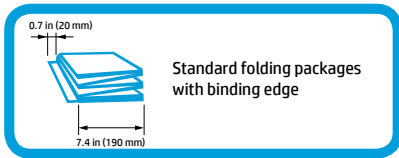
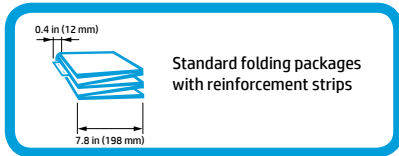
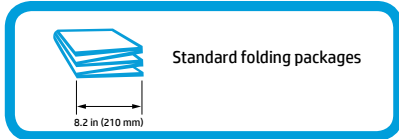
- Control the folder and folding styles from HP SmartStream software, the driver, the scanner, or the printer touchscreen
- Bi-directional communication between the printer and the folder enables reliable operation
- Monitor folder status from the printer or the HP SmartStream software; the job queue halts when the folder has stopped

High speed

- The HP PageWide XL Folder is designed to match the breakthrough productivity of HP PageWide XL printers
- Stack up to 150 E/A0-size folded packages

Versatility

- Opt for the standard HP PageWide XL Folder or for the HP PageWide XL Folder with Tab Applicator if you need to apply reinforcement strips to your documents
- Fold up to 36 in (914 mm) in width and up to 8.2 ft (2.5 m) in length for fully folded packages; fan fold up to 19.7 ft (6 m) in length; add the HP PageWide XL Folder Upgrade Kit for Long Plots for unlimited length fan folding
- Choose from pre-defined folding programs or create your custom folding styles
- Supports DIN, AFNOR, ANSI, and US folding standards



Ordering information	L3M58A	HP PageWide XL Folder with Tab Applicator
	MOV04A	HP PageWide XL Folder Upgrade Kit for Long Plots

2. HP PageWide XL High-capacity Stacker⁵

Compatible with the HP PageWide XL 8000 Printer and the HP PageWide XL 5000 Printer series, the HP PageWide XL High-capacity Stacker has a maximum input width of 40 inches (1016 mm).



Ordering information	CZ319A	HP PageWide XL High-capacity Stacker
-----------------------------	--------	--------------------------------------

3. HP PageWide XL Top Stacker

The top stacker is designed to save space and allows the printer to be placed against a wall. Provides capacity up to 100 pages.



Ordering information	CZ320A	HP PageWide XL Top Stacker
-----------------------------	--------	----------------------------

Scanning and copying



1. HP Pro Scanner series

Optimized for HP PageWide XL and HP DesignJet printers, the HP Pro Scanner series offers ultra-fast processing speeds with an Intel Core i7 processor and high scan speeds²¹ up to 6-inches/sec (150-mm/sec) color and up to 13-inches/sec (330-mm/sec) black and white.

- The **HP HD Pro 42-in Scanner** delivers exceptional, high-quality results with 1200 dpi optical resolution. Reproduce everything from technical documents to graphics—even old, delicate, or damaged originals—up to 0.6-inches (15-mm) thick with CCD technology.
- The **HP SD Pro 44-in Scanner** helps boost production with accurate color scanning—crisp lines and fine detail—delivered in high speed. Reproduce AEC/CAD drawings, blueprints, and maps using CIS scanning technology.

Ordering information	G6H50B	HP SD Pro 44-in Scanner
	G6H51B	HP HD Pro 42-in Scanner

2. Print/scan/copy with a multifunction printer

Print, scan, and copy in a single device. The integrated 1200 dpi 36-in color scanner provides advanced and convenient workflows.



8 Ease of use

Meet demand peaks with ease

The HP PageWide XL printer portfolio is designed to help you manage high-volume monochrome and color production printing with ease.



8-inch (203-mm) touchscreen—status light reports current status and provides progressive alerts on potential issues that could impact production (i.e., out of paper or ink)

Smooth navigation of workflows from the front panel

Integrated system for remote monitoring

Dual HP ink supplies with auto-switch—replace used cartridges while the printer is running (for HP PageWide XL 8000 Printer and HP PageWide XL 5000 Printer series)

Up to 6 rolls—upload media rolls without a spindle

End-to-end workflow consolidation

9 HP media offering for HP PageWide XL pigment inks

HP PageWide XL printing materials are designed to perform with the breakthrough technology provided by HP PageWide XL printers. The technological advances of HP PageWide XL printing require special ink formulations and strictly controlled interactions between HP PageWide XL pigment inks and the paper to achieve high-quality printing in a single pass. Because the paper moves and the printhead doesn't, these printing materials have been designed to achieve the precise control of paper motion needed for superb results:

- Optimized with HP PageWide XL printers and pigment inks for high-quality printing
- Less ink with increased color on HP bond papers with ColorPRO Technology
- Cost-effective for everyday use in high-production environments
- Fade resistance and quick-dry time
- Recyclable²² and FSC®-certified papers²³

HP bond papers with ColorPRO Technology for HP PageWide Technology—use 13.5% less ink and provide up to 60% more color than standard bond papers,²⁴ making these papers a highly cost-effective solution:

- HP 20-lb Bond with ColorPRO Technology, 3-in Core (75 g/m²)
- HP 24-lb Bond with ColorPRO Technology, 3-in Core (90 g/m²)
- HP Universal Bond Paper, 3-in Core (80 g/m²)
- HP Premium Bond Paper, 3-in Core (120 g/m²)
- HP Bright White Inkjet Paper, 3-in Core (90 g/m²)

HP PageWide XL printing materials:

- HP Universal Coated Paper, 3-in Core (90 g/m²)
- HP Universal Heavyweight Coated Paper, 3-in Core (131 g/m²)
- HP Production Matte Poster Paper, 3-in Core (160 g/m²)
- HP Production Satin Poster Paper, 3-in Core (160 g/m²)
- HP Gloss Poster Paper, 3-in Core (190 g/m²)
- HP Matte Polypropylene, 3-in Core (100 g/m²)



10 HP Certified Partner Solutions



Production workflows

Manage multiple large-format printers, scanners, and finishing devices from a variety of manufacturers from a single workflow. Receive jobs from both local and remote clients. Preview jobs, manage and convert file formats, and define job settings from a single user interface. Optimize media usage through nesting, and apply stamps and watermarks to printed output.

Certified raster image processors

HP has certified a number of third-party Raster Image Processors (RIPs), enabling additional control over elements such as color management, ICC profile management, tiling and nesting, support of multiple printers, and optimization of PANTONE® and spot color.

Cost recovery and allocation

Track large-format print volumes so that print, scan, and copy costs can be allocated to the correct department, project, or end user.

Fleet management

Remotely monitor fleets of large-format printers and track usage for more accurate and timely invoicing. Manage devices remotely, and get notifications when consumables are running low and are ready for automatic replenishment. Proactively manage device service needs to help ensure maximum uptime.

Secure scan, copy, and print release

Lock down your large-format MFPs and printers so that only authorized users who authenticate themselves via a PIN code or Security Card can use the devices. Meet HSPD-12 Department of Defense compliance requirements.

Collaboration

Streamline project management by easily scanning, printing, and sharing drawings with your partners and clients anywhere in the world via cloud collaboration technology. Capture and share ideas in real time.

Output management software

Distribute engineering drawings across your enterprise and print them on large-format printers from multiple manufacturers.

Take input from multiple CAD applications, Product Data Management, ERP, and Archive Systems. Manage multiple file formats (PDF, TIFF, HPGL, CGM, DOC, XLS, DWG, JPEG, TXT, SAPGOF).



11 HP PageWide XL printing and the environment

A better choice for the office—and the environment

HP PageWide XL printers are the latest in a long line of innovative HP products designed under the umbrella of our Design for Environment (DfE) program. DfE is an engineering perspective that seeks to develop innovative products that can help customers decrease the overall environmental impact of printing. Unlike LED technology, HP PageWide Technology operates without a fuser, reducing heat and noise generated—and producing no ozone.²⁵ HP PageWide XL printers can be seamlessly integrated into the workplace with typical ventilation.²⁶

HP PageWide XL printers have also earned a number of leading environmental credentials including ENERGY STAR® certification for superior energy efficiency, and EPEAT Silver registration,²⁷ assessing environmentally preferable products that meet rigorous criteria across the complete product life cycle (from materials restriction to packaging and air quality).

In addition, HP PageWide XL ink cartridges can be used as a controlled product by a Nordic Ecolabelling printing company when Ecolabelling printed matter and applying or updating a Nordic Ecolabelling license. And all HP PageWide XL ink cartridges can be returned through the free, convenient HP Planet Partners recycling program.²⁸

HP PageWide XL printers are a great choice to help your business achieve your environmental goals—without forfeiting performance.



1. Compared to prints produced with HP 970/971/980 inks that are fade and moisture resistant per ISO 11798 Permanence and Durability Methods certification. For testing criteria, see hp.com/go/pagewidexclaims.
2. Fastest based on internal HP testing and methodology compared to alternatives for large-format printing of technical documents, GIS maps, and point-of-sale (POS) posters under \$200,000 USD as of March, 2015. Production costs savings based on comparison to a setup consisting of one monochrome LED printer and one color production printer, both under \$150,000 USD, as of April, 2015. Production costs consist of supplies and service costs, printer energy costs, and operator costs. For testing criteria, see hp.com/go/pagewidexclaims.
3. Fastest based on alternative low-volume LED printers and MFPs (under 7 D/A1 pages/minute) as of April, 2015. Operational costs based on low-volume LED technology under \$20,000 USD in the market as of April, 2015. Operational costs consist of supplies and service costs. For testing criteria, see hp.com/go/pagewidexclaims.
4. Production costs savings based on an HP PageWide XL 5000 Printer compared with a combination of a mid-volume monochrome LED printer and a mid-volume color production printer (both under \$40,000 USD) as of April, 2015. Production costs consist of supplies and service costs, printer energy costs, and operator costs. For testing criteria, see hp.com/go/pagewidexclaims.
5. The HP PageWide XL Folder is an optional accessory. The HP PageWide XL High-capacity Stacker may be an optional accessory. Options vary by region.
6. Based on internal HP testing on the HP PageWide XL 8000 Printer compared to using two different printers (one monochrome LED printer, one color printer). For testing criteria, see hp.com/go/pagewidexclaims.
7. Using HP SmartStream software compared with using equivalent software programs. For testing criteria, see hp.com/go/pagewidexclaims.
8. For output produced with HP PageWide XL printers and LED printers from different manufacturers and that represent greater than 50% of the annual shipments of LED printers in North America as of 2014 according to IDC. For testing criteria, see hp.com/go/pagewidexclaims.
9. ISO/US technical and offset standards include American ANSI and Architectural page size standards, ISO A technical document standard, and ISO B offset page size standard.
10. Based on supplies and service costs for comparable LED printers under \$150,000 USD for large-format printing of technical documents as of April, 2015 which represent more than 80% of the share of high-volume LED printers in the US and Europe in 2014 according to IDC. For testing criteria, see hp.com/go/pagewidexclaims.
11. Based on supplies and service costs for comparable color printers capable of printing 4 D/A1 pages per minute or more and under \$150,000 USD for large-format printing of technical documents as of April, 2015 and representing more than 80% of the market in the US and Europe in 2014 according to IDC. For testing criteria, see hp.com/go/pagewidexclaims.
12. Conclusions based on internal HP testing for a specific use scenario. Comparable printers using LED technology based on LED printers capable of printing 18 to 22 D/A1 pages per minute and which represent more than 80% of the share of high-volume LED printers in the US and Europe according to IDC as of April, 2015. For testing criteria, see hp.com/go/pagewidexclaims.
13. Based on internal HP testing on the HP PageWide XL 5000 Printer compared to preparing and printing the job on two different printers (one comparable monochrome mid-volume LED printer for the monochrome pages and one color printer for the color pages). For testing criteria, see hp.com/go/pagewidexclaims.
14. Based on supplies and service costs. Monochrome technical document printing costs for comparable mid-volume LED printers based on printers for large-format printing of technical documents at speeds between 8 and 13 D/A1 per minute as of April, 2015 which represent more than 80% of the share of mid-volume LED printers in the US and Europe in 2014 according to IDC. Color technical document printing costs for comparable mid-volume color printers based on printers capable of printing 4 D/A1 pages per minute or more and under \$50,000 USD for large-format printing of technical documents as of April, 2015 and representing more than 80% of the market in the US and Europe in 2014 according to IDC. For testing criteria, see hp.com/go/pagewidexclaims.
15. Conclusions based on internal HP testing for a specific use scenario. Comparable printers using LED technology based on LED printers capable of printing 8 to 13 D/A1 pages per minute and which represent more than 80% of the share of mid-volume LED printers in the US and Europe according to IDC as of April, 2015. For testing criteria, see hp.com/go/pagewidexclaims.
16. Conclusions based on internal HP testing for a specific use scenario. Comparable printers using LED technology based on LED printers capable of printing 4 to 6 D/A1 pages per minute and which represent more than 80% of the share of mid-volume LED printers in the US and Europe according to IDC as of April, 2015. For testing criteria, see hp.com/go/pagewidexclaims.
17. Proven HP PageWide Technology powers HP PageWide Web Presses—currently producing 4 billion impressions monthly—and HP X series business printers.
18. HP PageWide XL PostScript/PDF Upgrade Kit is standard for the HP PageWide XL 4000/4500 Multifunction Printers.
19. Using HP SmartStream software, job preparation and processing can be completed in 50% of the time. Conclusion based on an HP internal test measuring the time required to extract pages from a 50-page document and print them using several printers compared with using equivalent software programs.
20. Adobe PDF Print Engine 3 is the next-generation rendering platform, optimized for end-to-end PDF workflows. Adobe PDF Print Engine 3 combines performance optimizations with a new scalability framework to power high-speed digital presses, large-format printers, and CTP platesetters. Adobe PDF Print Engine 3 is the fastest rendering platform for reliable reproduction of complex, graphically rich content. To learn more, visit adobe.com/products/pdfprintengine.
21. Monochrome scanning: D/A1 image with black text graphics at 200 dpi; color scanning: D/A1 fully-inked color image at 200 dpi, 24-bit RGB.
22. HP Large-format Media take-back program availability varies. Some recyclable HP papers can be recycled through commonly available recycling programs. Recycling programs may not exist in your area. See HPLFMedia.com/hp/ecosolutions for details.
23. BMG trademark license code FSC®-C115319, see fsc.org. HP trademark license code FSC®-C017543, see fsc.org. Not all FSC®-certified products are available in all regions. For information about HP large format printing materials, please visit HPLFMedia.com.
24. Based on ink consumption and color gamut measurements of HP papers with ColorPRO Technology and standard papers without ColorPRO Technology when printed on the HP PageWide XL 8000 Printer.
25. Based on third-party testing conducted in 2014 and 2015, no ozone was detected.
26. Special ventilation equipment (air filtration) is not required to meet U.S. OSHA requirements. Special ventilation equipment installation is at the discretion of the customer. The need for special ventilation is not anticipated. In case of doubt, customers should consult state and local requirements and regulations.
27. EPEAT registered where applicable and/or supported. See epeat.net for registration status and rating by country.
28. Visit hp.com/recycle to see how to participate and for HP Planet Partners program availability; program may not be available in your area. Where this program is not available, and for other consumables not included in the program, consult your local waste authorities on appropriate disposal.
29. Financing and service offerings available through Hewlett-Packard Financial Services Company and its subsidiaries and affiliates (collectively HPPFSC) in certain countries and is subject to credit approval and execution of standard HPPFSC documentation. Rates and terms are based on customer's credit rating, offering types, services, and/or, equipment type and options. Not all customers may qualify. Not all services, and/or offers are available in all countries.



770.434.3050 • www.reproproducts.com

© Copyright 2016 HP Development Company, L.P. The information contained herein is subject to change without notice. The only warranties for HP products and services are set forth in the express warranty statements accompanying such products and services. Nothing herein should be construed as constituting an additional warranty. HP shall not be liable for technical or editorial errors or omissions contained herein.

Adobe and Adobe PostScript 3 are trademarks of Adobe Systems Incorporated. ENERGY STAR and the ENERGY STAR mark are registered trademarks owned by the U.S. Environmental Protection Agency.

4AA6-2830ENA, February 2016

